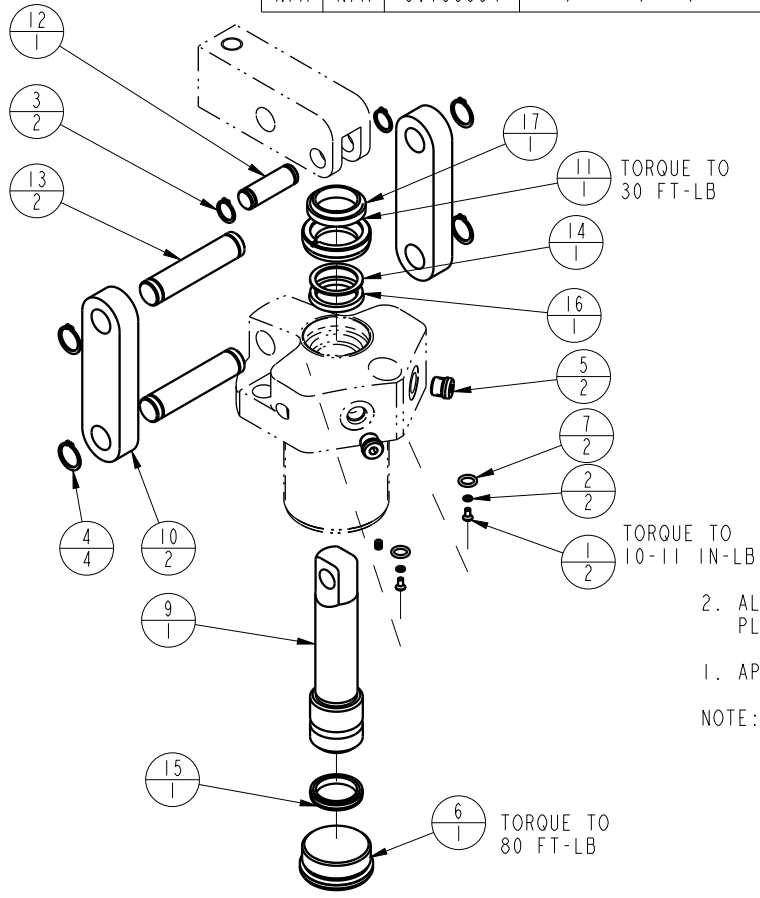



1		2			
MODEL NO.		MODEL NAME			
16621400		ASSY, LC, DA, 5000			
NO.	QTY	PART NO.	DESCRIPTION	STD SEAL KITS	FKM SEAL KIT
1	2	21500019	SCREW, CAP, BTNH, M3 X 6, ALY		
2	2	21500200	WASHER		
3	2	23050023	RING, RTNG, EXT, 0.500	X	X
4	4	23050024	RING, RTNG, EXT, 0.625	X	X
5	2	30601144	PLUG, SOCH, SAE 4		
6	1	30670004	PLUG, SAE 20, FKM	X	X
7	2	39050042	O-RING, (-011)	X	39051025
8	1	67040065	TAG, LINK ASSY, LC		
9	1	81600009	PLUNGER, LC, DA, 5000/ 22 KN		
10	2	81600024	LINK, LC, 5000 1b		
11	1	81600039	RETAINER, LC, 5000		
12	1	81600079	PIN, LC, SHORT, 5000		
13	2	81600084	PIN, LC, LONG, 5000		
14	1	39F54007	BU RING, (-214)	X	X
15	1	39H11033	SEAL, T, (1 X 1/8 X 1 1/4)	X	39V11033
16	1	39H52042	SEAL, BEVEL, 1 x 1/8 x 1-1/4	X	39V52042
17	1	39V53029	WIPER, SNAP-IN, (1)	X	X
N/A	N/A	60160004	KIT, SEAL, LC, 5000/22KN	NOTED	
N/A	N/A	6V160004	KIT, SEAL, LC, 5000/22KN, FKM		NOTED



2. ALL SEALS, BU RINGS, RETAINING RINGS, O-RINGS, AND PLUGS ARE INCLUDED IN THE SEAL KIT.

1. APPLY LUBRICANT TO ALL SEALS PRIOR TO ASSEMBLY.

NOTE:

PARTS LIST	 VEKTEK, INC. 1334 E. SIXTH AVE. P.O. BOX 625 EMPORIA, KS. 66801 U.S.A.	
	ASSEMBLIES AFFECTED 16-6214-00	PARTS LIST, LC, DA, 5000
SIZE A	PL1604	REV F

F	5718	RELEASE	NPETERS	6/9/25
REV	IN ACCORDANCE WITH ECN	EFFECTIVE DATE	REVISED BY	DATE
DRW BY:	K. ROEMER	DRAWING STATUS: Released		
DATE:	07/30/04	PRODUCTION APPROVED FOR RELEASED STATUS ONLY		